



THE ABIGAIL



THE ABIGAIL Floor plan number: SAD024117ALAB
4 beds • 2 baths • 1856 sq.ft. • 32' width • 58' depth

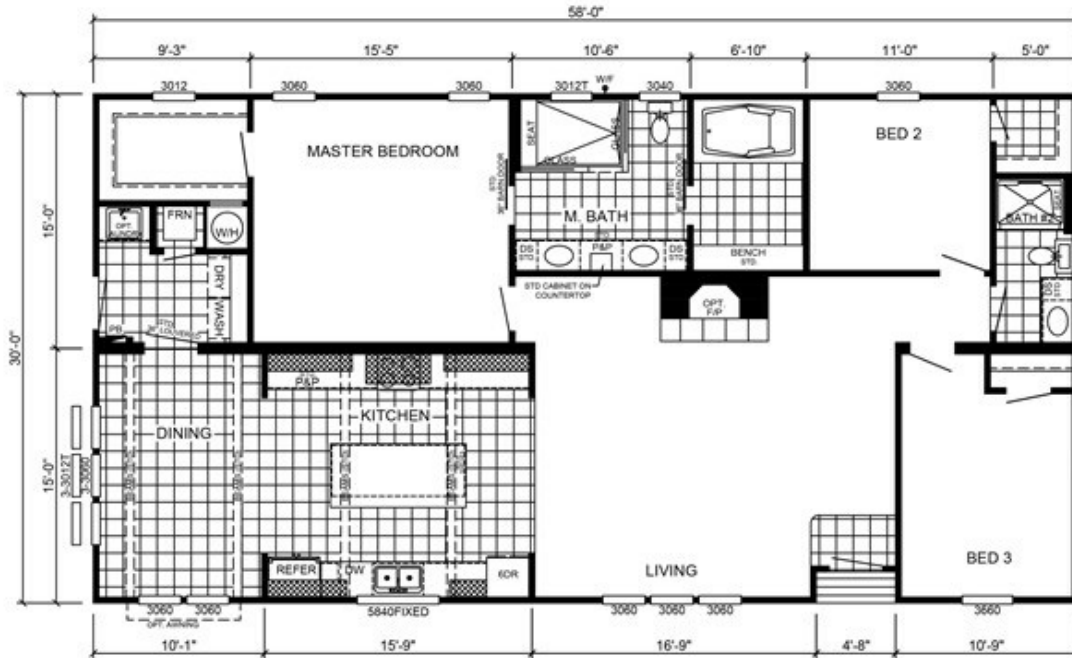


ESTATES SERIES

EST-1011

58' x 32'

APPROX: 1731 SQ. FT. (LIVING)
9 SQ. FT. (PORCH)



Our home building facilities invest in continuous product and process improvements. Plans, dimensions, features, materials, specifications and availability are subject to change without notice or obligation. Renderings and floor plans are representative likenesses of our homes and may differ from the actual homes. We invite you to tour a Home Center near you and inspect the highest value in quality housing available or call (270) 782-8580 to speak with a Home Consultant. Copyright 2017, CMH. All rights reserved.

CLAYTON HOMES-BOWLING GREEN

4433 RUSSELLVILLE ROAD
BOWLING GREEN, KY 42101

Monday - Thursday: 9am - 6pm
Friday: 9am - 5pm
Saturday: 9am - 5pm
Sunday: Closed

(270) 782-8580